

PHILOSOPHY PROJECT ON DRAMAS REPRESENTING ART

CHEESE IN THE TRAP

ITAEWON CLASS





Name of the Drama: Itaewon Class
Date of release of the Drama : (31 January 2020)



Name of the Drama: Cheese in the trap
Date of release: (4 January 2016)



PLOT : ITAEWON CLASS

It is the story of ex-convict Park Sae-ro-yi whose life takes different turns after he gets expelled from school for punching a bully and his father is killed in an accident.

After getting out of prison he opens his bar DanBam which means Honey Night, in Itaewon.

With the support of his manager, Yi Seo and his staff, he works hard to achieve success while battling against a food conglomerate who is actually the father of the bully who landed him in Jail.

JTBC 금토드라마

태워 크라쉬

PLOT : CHEESE IN THE TRAP



• *Cheese in the trap* tells the real life problems and relationship of hard working university students, Seob and Jung.

• The story further complicates upon the arrival of two siblings, Inho and Inha.

• They were really close to Jung during his childhood but due to some misunderstandings they grew apart from each other.

ISSUES DISCUSSED IN THESE DRAMAS

Cheese In The Trap

- ❖ Injustice
- ❖ Accepting Someone
- ❖ Mental Health
- ❖ Team Work
- ❖ Love and Trust
- ❖ Passion for Work
- ❖ Hard Work in life
- ❖ Past Struggles and Traumas

Itaewon Class

- ❖ Injustice
- ❖ Transgender issues
- ❖ Class differences
- ❖ Power of Money
- ❖ Loving People around you
- ❖ Racism
- ❖ Struggle and Hard Work in Life
- ❖ Equality

The background of the slide is a 2x2 grid of digital art. Each quadrant shows a dark blue sky filled with numerous glowing orange and red rectangular shapes, resembling falling confetti or digital particles. A bright, glowing light source is visible on the horizon in the bottom two quadrants, creating a lens flare effect. The overall aesthetic is futuristic and artistic.

Dramas Representing Theories of Art



Art as Representation

According to Plato whatever objects exist in the imperfect world of objects are an imitation or representation of the world of ideas.

We are just trying to copy the ideas of the world while living in the world of simple objects.

When art is taken as representation, imitation or displaying something it represents reality.

As per Plato a perfect society does not exist and we cannot find it at all.

Representation has been associated with aesthetics and semiotics which refers to signs.



How these points relate to these dramas

Similarly in the two dramas, there are imperfections in the society and that is why people in these dramas face struggles and hindrances in their lives from achieving success and mental peace.

Since the world we live in is an imperfect world unlike the world of ideas, even our lives can never be flawless and without any problems.

These characters represent the writer's thoughts just like Mitchell has said in her quote.



Art as Expression

Art is manifestation of the inner artist.

Art expresses moods, feelings, emotions, insecurities, etc.

According to Collingwood the artist struggles to clarify and articulate his initially unfocused feeling.

Expression is contained within a form. The form, regardless of what it is, is what captures the expression which is the artist's inner truth.

How “Art as Expression” is related to these Dramas

The writers of the original Web Comic have created these characters out of their mind and these characters somewhere represent their mental states.



Writers have efficiently penned down their innermost emotions and beliefs into the script.

The music producers of these dramas have also written lyrics which express their feelings that they might have felt in connection with the characters of the Drama.

Cinema as an Art



How these dramas are complex art

CLASS



- ✓ Productive
- ✓ Fine
- ✓ Pure
- ✓ Applied
- ✓ Performing



TECHNIQUES USED

- Cinematography
- Music according to the mood of the scenes
- Writing Style of Script
- Make up and dressing style
- Set up for different locations

A stylized illustration of a cozy cabin interior. In the foreground, a silver laptop with an Apple logo is open on a dark wooden table. Next to it is a white mug of coffee with steam rising from it, and the word 'JAZZ' is visible on the side. To the left of the laptop is a small electronic device, possibly a calculator or a small keyboard. In the background, a large window offers a view of a serene landscape with a calm lake, a dense forest of evergreen trees, and rolling hills under a soft, blue sky. The interior of the cabin features wooden floors and a bookshelf with a few books. The overall atmosphere is peaceful and inviting.

Music Used In This Drama

To Evoke Emotions

(Itaewon Class)



Singer: Lee Chan Sol

Song: Still Fighting it

“Everybody knows
It hurts to grow up...
But we are still fighting it...”



Singer: Ha Hyun Woo

Song: Diamond

“Even if I stumble and fall
I will just get up again
The more you try to beat me,
the more you will break
I’m like a stone that gets
stronger...”



Singer: Gaho

Song: Start Over

“Each one of us facing life
You might blame it at times

I can fly the sky
Never gonna stay

What I need now is courage
Even though it doesn't shine

I'll support my dream
And have the last laugh
Even if I'm running on one foot...”

A stylized illustration of a cozy cabin interior. In the foreground, a silver laptop with a glowing Apple logo is open on a dark wooden table. Next to it is a white mug of coffee with steam rising from it, and the word 'JAZZ' is visible on the side. To the left of the laptop is a small, colorful electronic device. The background shows a large window with a view of a serene lake and a dense forest of evergreen trees under a soft, blue sky. The overall mood is calm and inviting.

Music Used In This Drama

To Evoke Emotions

(Cheese in the trap)



Singer: SALTNPAPER

Song: Go

"I will try to be where I belong
Because there's nothing in the world
That could take this away

So I will go into
The dark of your night

Though I will follow you there
And wait for your light

For you I'm alive"

An abstract painting with thick, expressive brushstrokes in various colors including dark blue, black, white, red, orange, and yellow. The composition is dynamic and textured.

Singer: Kang Hyun Min

Song: Such

“Just one belief
I hope we won't look back at things gone by...”



Best Scenes

Itaewon Class

Standing up against a bully





Standing

Up

Against

Racism



They don't accept Africans.
Let's go somewhere else.



Acceptance
And Support



A scene from a Korean drama featuring three characters. On the left, a man with dark hair, wearing a green sweater, looks down with a serious expression. In the center, a woman with dark hair, wearing a black and white striped shirt with a red 'Love' graphic, is smiling. On the right, a woman with long, wavy red hair, wearing a white top with a green collar, looks towards the man. The background is a light-colored brick wall.

Best Scenes

Cheese in the trap

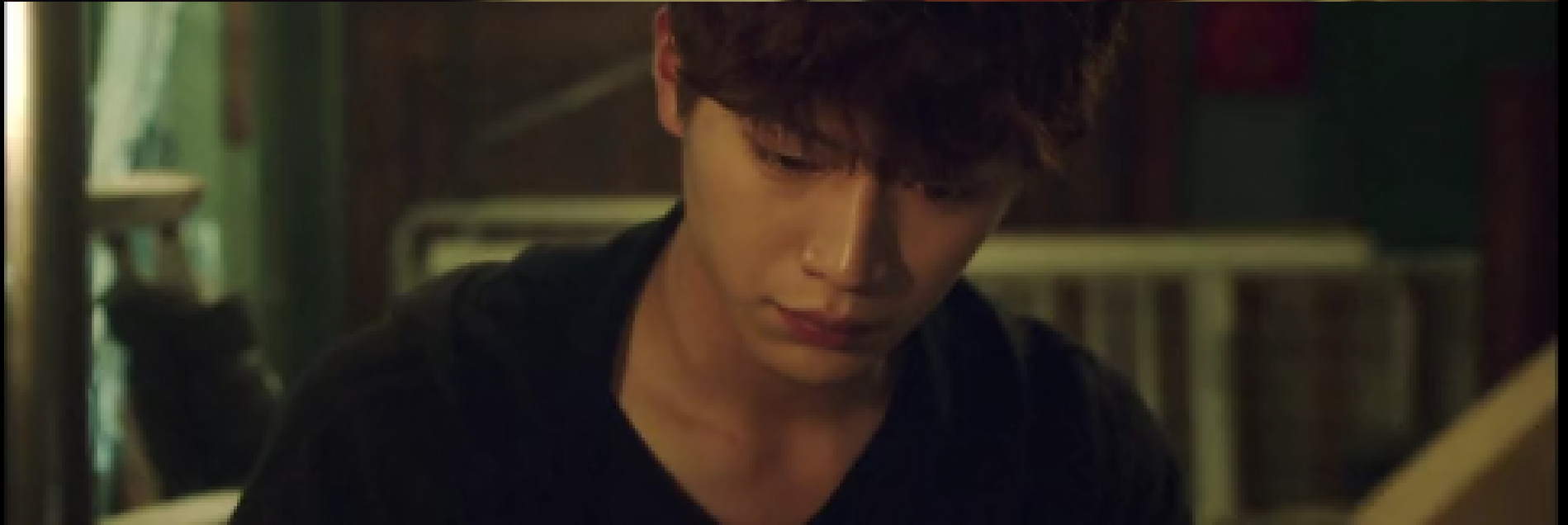
Team Work



Accepting Someone as they are



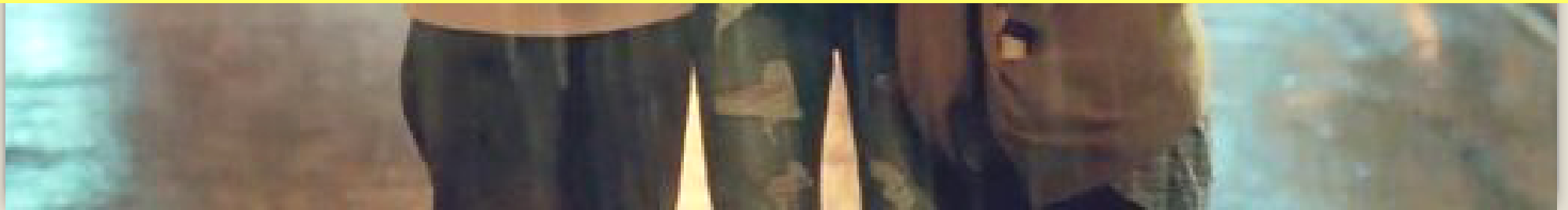
Never Giving Up On Your Dreams



Life is full of struggles



These struggles are aesthetically beautiful like a movie when we reminisce them in future, yet really hard when we experience them



THANK YOU

Submitted by:

Deeksha Rawat BAP/18/189

Nikita Grover BAP/18/43

BIBLIOGRAPHY

- Pinterest
- Wikipedia
- Viki Rakuten
- Youtube
- Spotify
- Zula.sg
- IMDB
- Dramabeans
- Film and Art appreciation class Notes